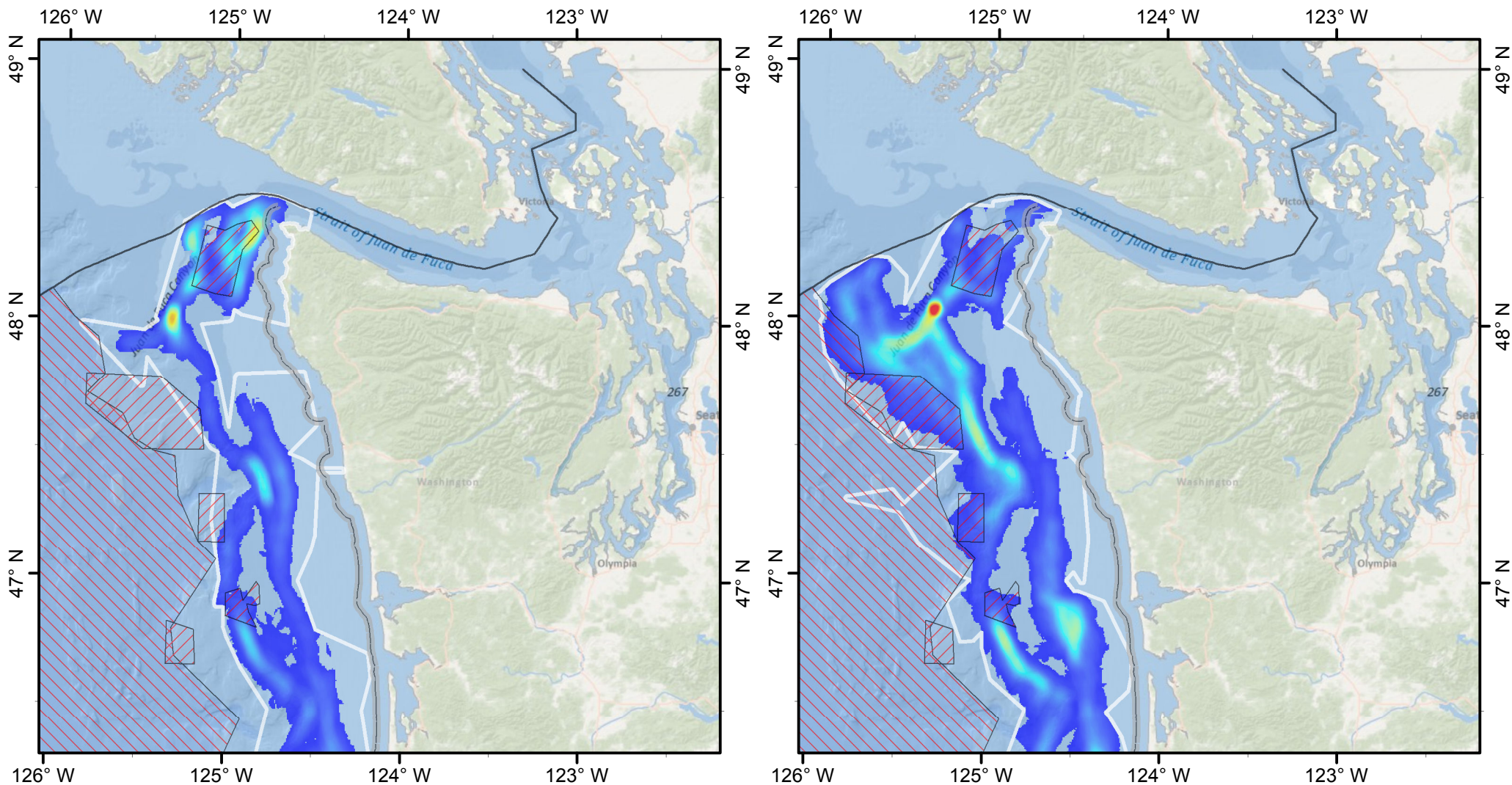
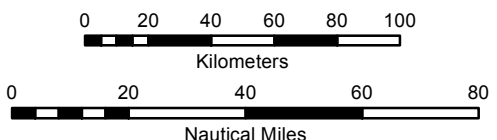


# Before Mid-Water Trawl Fishing Effort (At-Sea & Shoreside Sectors) After



**A2**



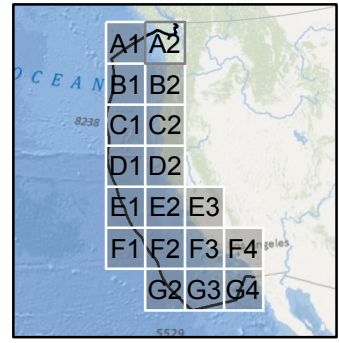
Map Scale: 1:2,400,000  
Date Saved: 20 Aug 2012

Authors: Curt Whitmire & Marlene Bellman (NMFS/NWFSC)

**Effort (km/km<sup>2</sup>)**

High : 53.669  
Low : 0.008

Extent Polygon  
EFH Cons. Area  
State Territorial Sea



Map 1 of 4

Search Radius: 3,000 m  
Cell Size: 500 m